

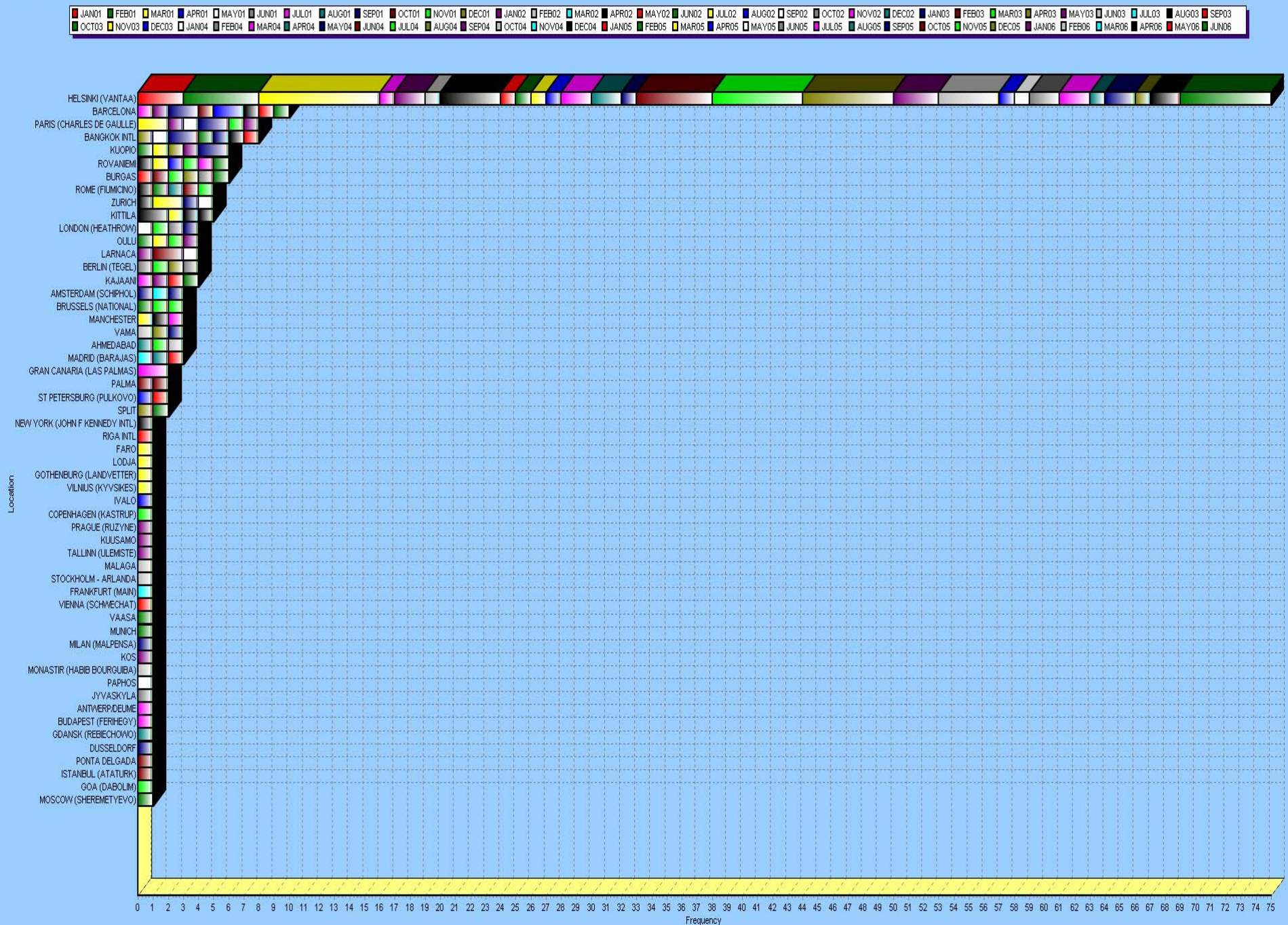
BIRDSTRIKE STATISTICS

2002-2007



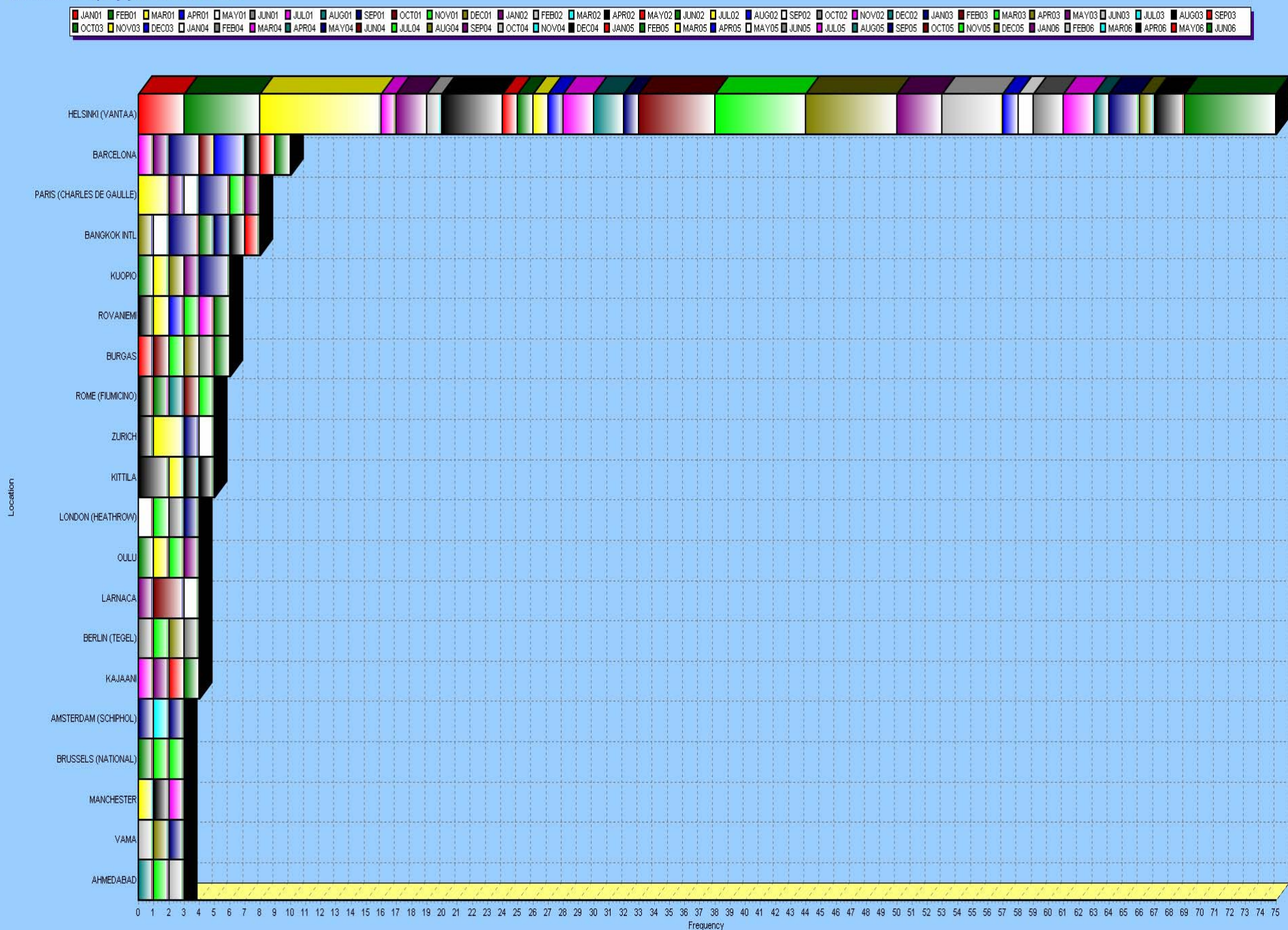
NBSAG 27-28.2007

BASIS/ASR Incident Frequency by Location : 01.01.01 to 30.06.06



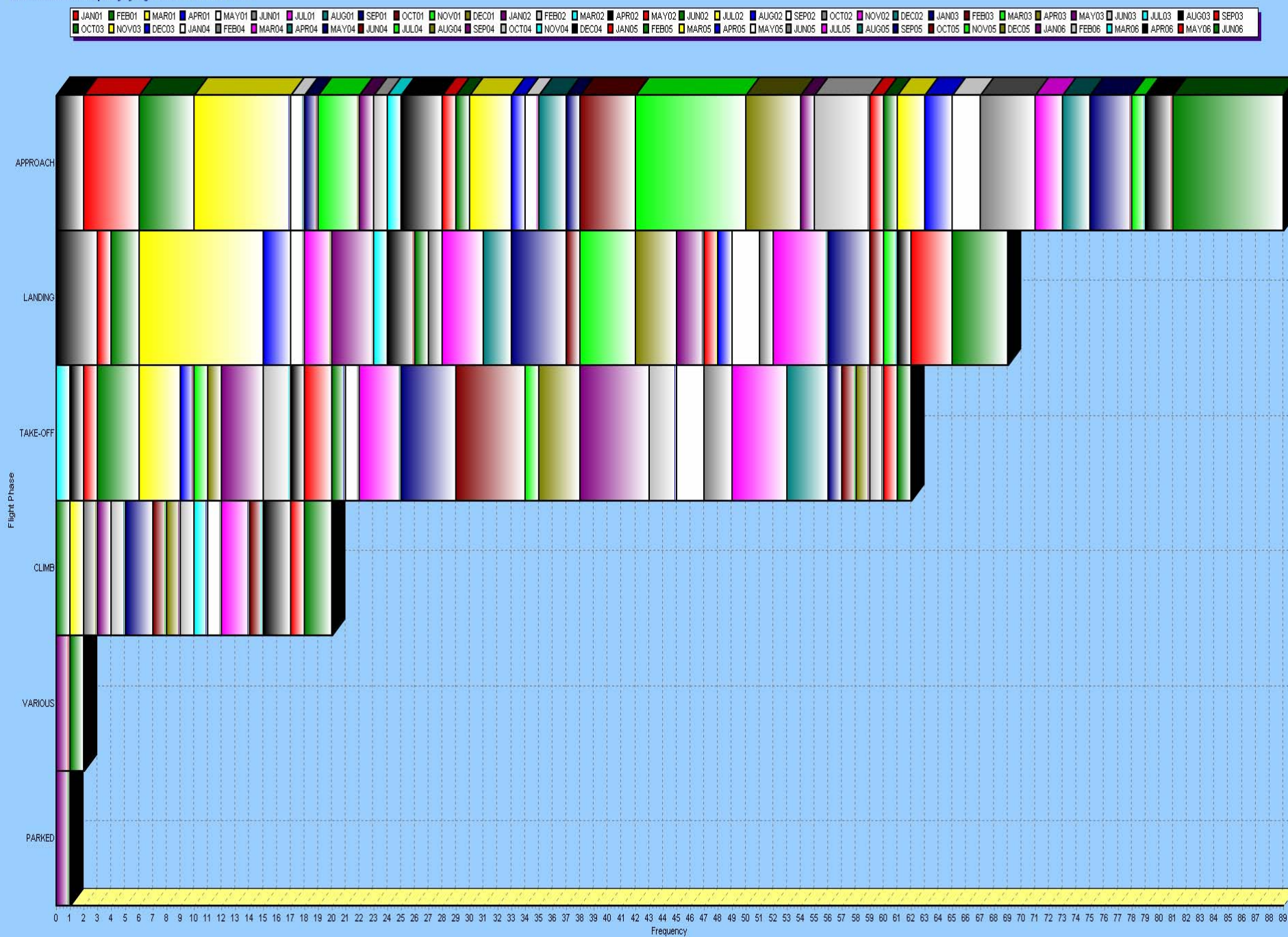
Filter: Keyword Descriptor is "Birdstrike", Report Date greater than 01.01.2002.

BASIS/ASR:Incident Frequency by Location : 01.01.01 to 30.06.06



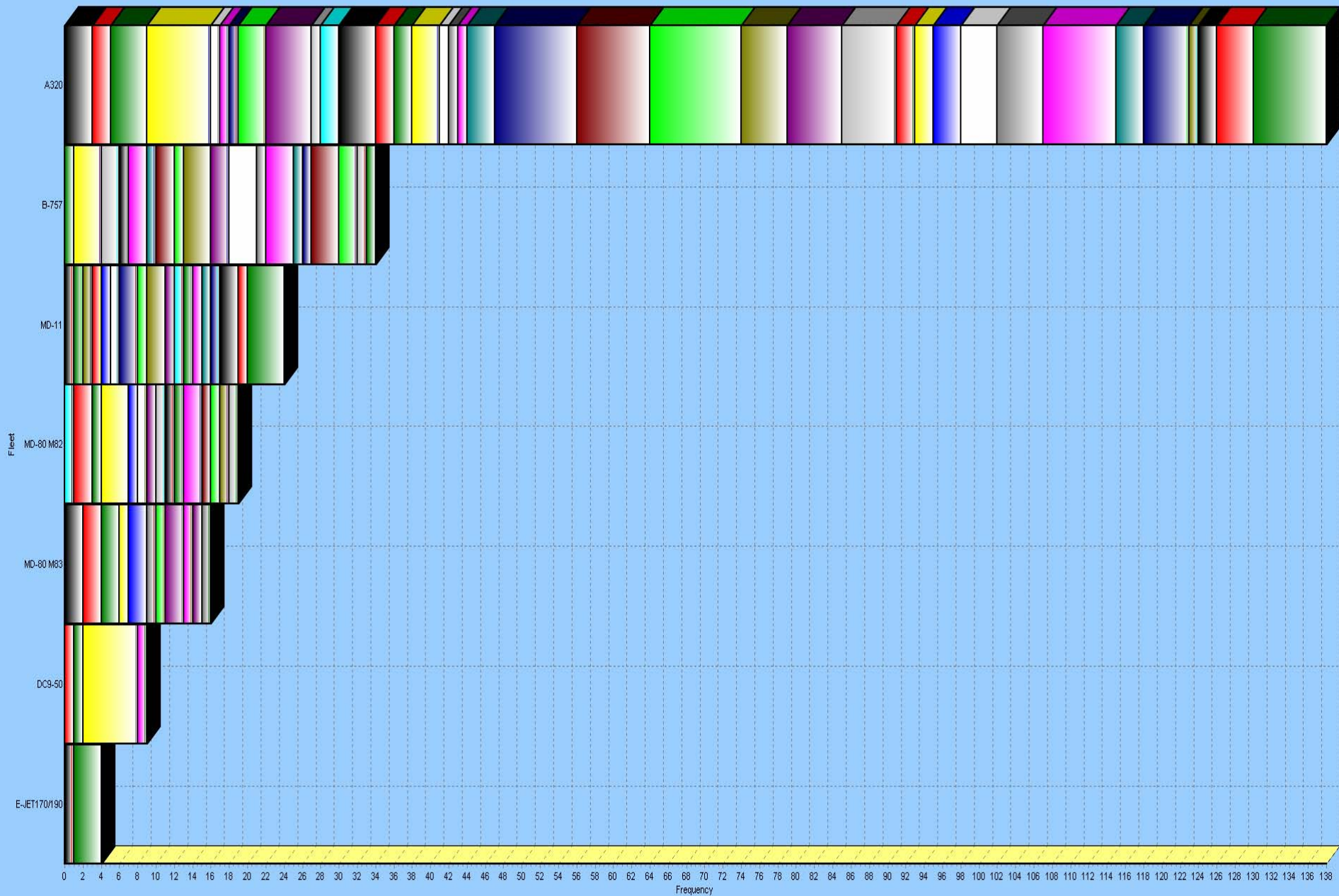
Filter: Keyword Descriptor is "Birdstrike", Report Date greater than 01.01.2002.

BASIS/ASR:Incident Frequency by Flight Phase : 01.01.01 to 30.06.06



Filter: Keyword Descriptor is "Birdstrike", Report Date greater than 01.01.2002.

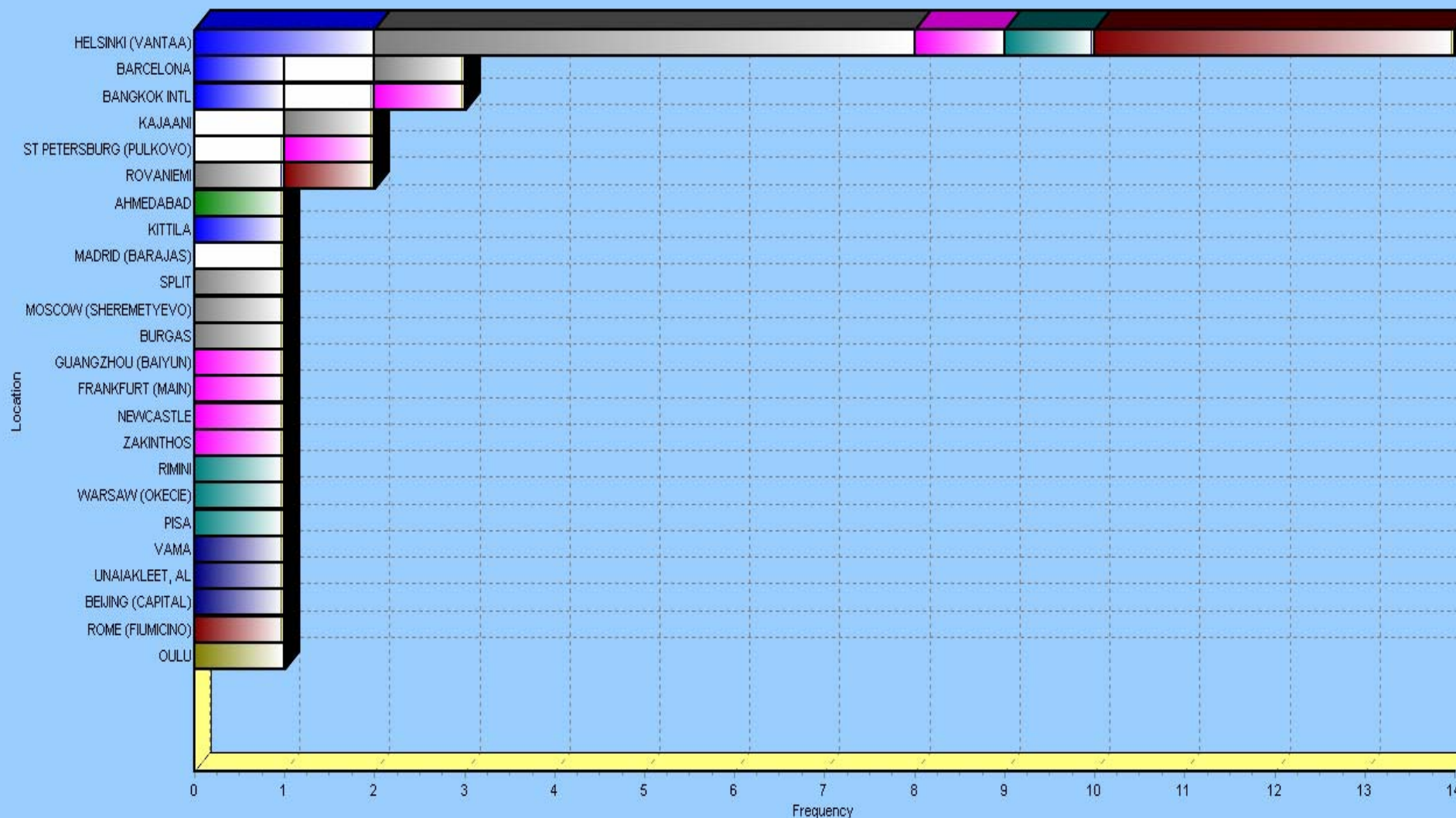
BASIS/ASR Incident Frequency by Fleet : 01.01.01 to 30.06.06



Filter: Keyword Descriptor is "Birdstrike", Report Date greater than 01.01.2002.

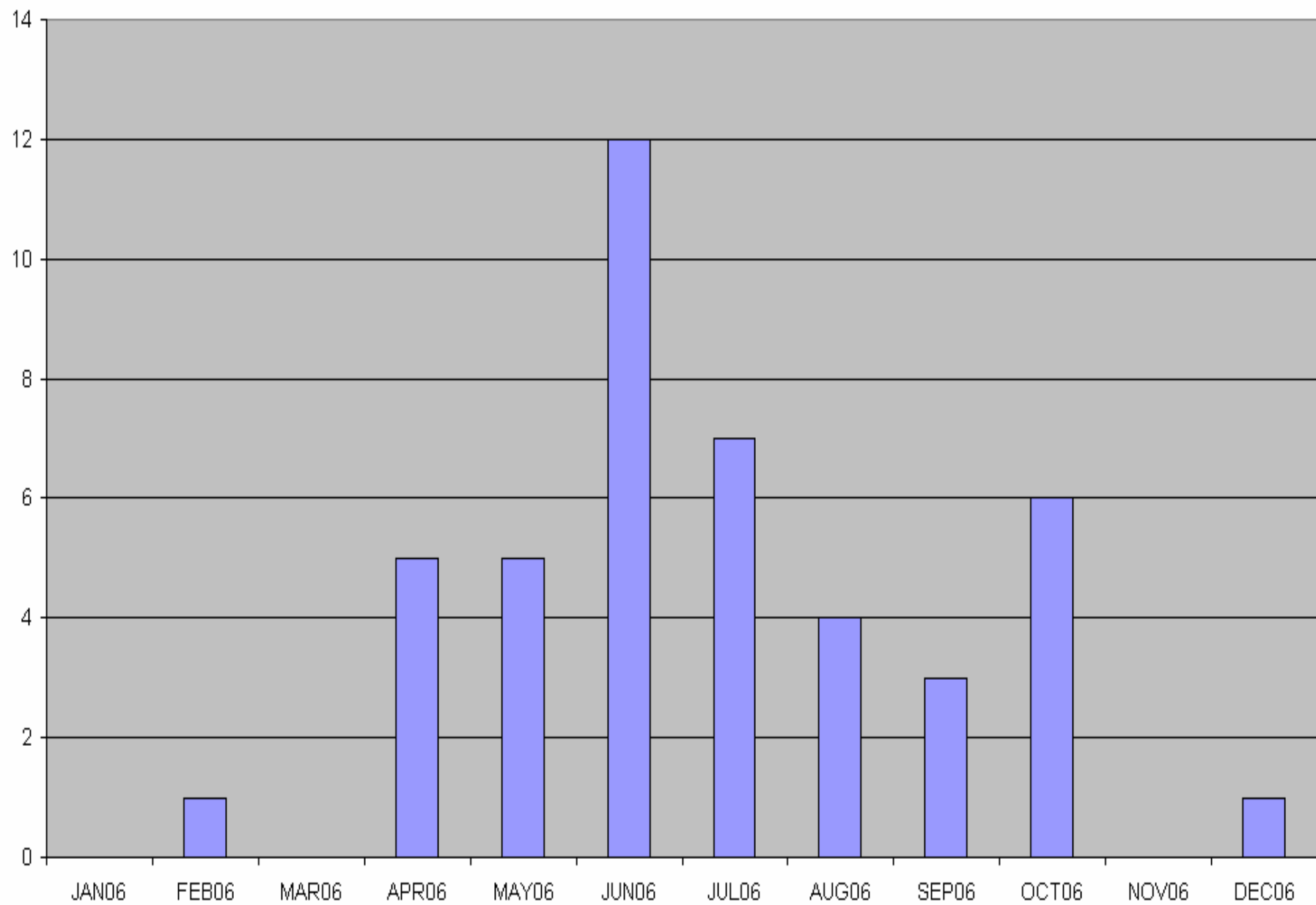
BASIS/ASR:Incident Frequency by Location : 01.01.06 to 31.12.06

■ JAN06
 ■ FEB06
 ■ MAR06
 ■ APR06
 ■ MAY06
 ■ JUN06
 ■ JUL06
 ■ AUG06
 ■ SEP06
 ■ OCT06
 ■ NOV06
 ■ DEC06



Filter: Keyword Descriptor is "Birdstrike", Report Date in range 01.01.2006 to 31.12.2006.

BIRDSTRIKES 2006



2/05/32S OHLVI 08.01.05 AY 353 HEL - OUL
Bird strike in Oulu.
Birds (4) sucked into thr RH engine.

Height: 0
Speed: 100kts

3/04/757 OHLBS 22.03.04 AY 2526 LPA - HEL
Bird strike in LPA
Crew: A bird (dove) hit engine no. 1.

Height: 0 ft
Speed: 160 kt

Both pilots noticed a bird (Dove) before rotation. Take-Off was continued and quite strong vibrating noise was felt and heard. Also vibration indication showed "2.0. Cabin Chief reported also about noise. Diverted back to GCLP. Overweight landing was smooth and situation was normal.

Flight interrupted. Visual inspection of LH Engine showed compressor blades ("4) damaged.

6/04/M82 06.03.04 AY 382 KAJ - HEL
Bird strike in Kajaani.
Crew. A flock of birds (about 40) =grouse/teeri hit the A/C.
As the phase of the flight was most critical, conditions marginal and engine failure due bird suction was obvious, the hazard should be considered important.

Height:?
Speed: 100-110 kts

55/07/E70 OHLEL 08.08.07 AY 376 OUL - HEL
Bird strike at Oulu

Several seagulls hit the a/c during T/O roll. Engines operating normal. Eleven dead birds found on the RWY. Flight continued normally to HEL. No engine abnormalities.

Speed: 110 kts
Altitude: GND

99/07/32S OHLZD 08.07.07 AY 892 MAD - HEL
Bird Strike in Helsinki

Plenty of seagulls, mostly below A/C. One of them hit capt's windshield.

Height: 2800 ft
Speed: 230 kt

28/07/E70 OHLEH 29.05.07 AY 869 HEL - GVA
INVEST MONITRD

Bird Strike in Geneva

Just before landing (30ft) very big bird hit the engine no.1.
Repairs took over 24hours. 4 blades changed to Eng. 1.

6/06/757 OHLBR 15.02.06 AY 1969 AMD - LGK

Birdstrike - serious damage

During take-off roll (at 90 kts) a big bird climbed from RWY05 straight into LH engine. We heard a big bang and smelled something burning through the air conditioning. We aborted T/O immediately and successfully and taxied back to the apron. No fire -> no evacuation.

In LH ENG stator vanes some blood and remainings of the eagle. Two holes found in acoustic panel at two o'clock position seeing backwards.

166/05/32S OHLXD 14.12.05 AY 489 HEL - JOE

Bird strike - damage to LP compressor blades

Crew: After T/O we took gear up, we heard a noise and found vibration both on pedals and instruments. We asked vectors back to Helsinki and made normal landing with both engines running.

3 fan blades were twisted.

Bird striked to engine one.

22/05/757 OHLBO 26.08.05 AY 2233 HEL - RMI Bird
strike in Helsinki

During takeoff run a seagul hit the plane. T/O aborted at approx. 105 kts. No indication on engine instruments.

Height:10 ft T/O

Spd:0

Thank You

Questions ?